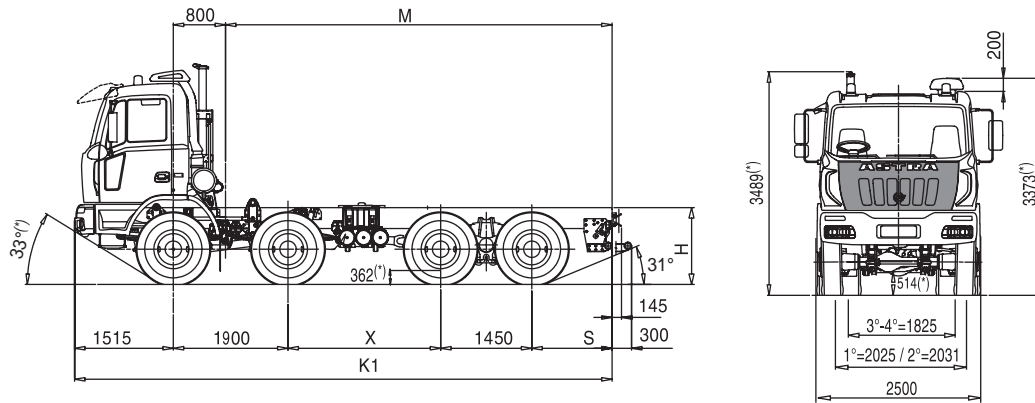


H&D RHD

chassis 8x6 86.44 / 86.48



(*) unloaded



DIMENSIONS (mm) (Tyres 13R22,5 156/150G)

wheelbases	X	K1	M	S	S OPT	H		TURNING DIAMETER
						UNLOADED	LOADED	
A	2350	8415	6100	1200	875/1500	1254	1189	17400
B	2600	8665	6350	1200	875/1500			18200
C	2850	8915	6600	1200	875/1500			19000
D	3100	9165	6850	1200	875/1500			19700
E	3350	9415	7100	1200	1500			20500
F	3600	9965	7650	1500				21300
G	4100	10465	8150	1500				22800



WEIGHT (kg)

wheelbases	Distribution net weight (*) (*)				Max. technical weight				
	1 st axle	2 nd axle	3 rd + 4 th axle	Net weight	1 st +2 nd axle		3 rd + 4 th axle	Gross Vehicle weight	Gross Combination weight
A	4035	3600	4435	12070	16000	18000 (1)	32000	50000 (2)	104000
B	4025	3585	4490	12100					
C	4020	3585	4520	12125					
D	4045	3610	4540	12195					
E	4030	3595	4640	12265					
F	4025	3590	4680	12295					
G	4035	3595	4700	12330					

(*)Weight including oil, fuel, spare wheel, driver Kg.75

 (1) With tyres 1st and 2nd axle 385/65R22,5 160J or 365/85R20164G. Other tyres available, subject to the Astra technical office approval.

(2) Max speed 50 km/h. Michelin/Pirelli tyres. Higher speed are allowed with load reductions subject to the Astra Technical office approval.



ENGINES

CURSOR 13 turbo intercooler euro 3 diesel injection/cycle with electronic unit injection pumps. Single block head, four valves per cylinder, light alloy pistons. Total displacement: 12.882 cm³. Bore for stroke: 135 x 150 mm. 6 in-line cylinders. Water cooling. Viscostatic cooling fan. Dry air filter with safety cartridge. Vertical muffler

	86.44	86.48
Model	IVECO F3B	IVECO F3B
Max. power (EEC)	324 kW (440 HP)	353 kW (480 HP)
Corresponding rpm	1.900	1.900
Max. torque (EEC)	2.100 Nm (214 kgm)	2.200 Nm (224 kgm)
Corresponding rpm	1.000-1.440	1.000-1.440
Turbine	VGT variable geometry	



GEARBOX

Manual gear **ZF 16 S 2220 TO** for HD8 86.44 and **ZF 16 S 2520 TO** for HD8 86.48 with servoshift, 16 synchronised forward speeds + 2 reverse.

		Speed [kph] at maximum power rpm																		
		Gears																		
		1	2	3	4	5	6	7	8	9	10	11	12	13	14	15	16	RM	RM	
ZF 16 S 2220TO ZF 16 S 2520TO	Gear ratios	13,80	11,54	9,49	7,93	6,53	5,46	4,57	3,82	3,02	2,53	2,08	1,74	1,43	1,20	1,00	0,84	12,92	10,80	
	Rear axle ratio	1:4,229	7,1	8,5	10,3	12,3	15,0	17,9	21,4	25,6	32,4	38,7	47,0	56,2	68,4	81,5	97,8	116,4	7,6	9,1
		1:5,009	5,7	6,8	8,2	9,8	11,9	14,3	17,1	20,4	25,8	30,8	37,5	44,8	54,6	65,0	78,0	92,9	6,0	7,2
		1:5,558	5,1	6,1	7,4	8,9	10,8	12,9	15,4	18,4	23,3	27,8	33,8	40,4	49,2	58,6	70,3	83,7	5,4	6,5
		1:6,095	4,6	5,6	6,8	8,1	9,8	11,7	14,0	16,8	21,2	25,3	30,8	36,8	44,8	53,4	64,1	76,3	5,0	5,9
		1:6,588	4,3	5,1	6,3	7,5	9,1	10,9	13,0	15,5	19,6	23,4	28,5	34,1	41,5	49,4	59,3	70,6	4,6	5,5



P.T.O.

On request:

Gearbox	ZF16S2220TO-ZF16S2520TO	Max. torque	Application
P.T.O.	Ratio	Nm.	
ZF NH/1b	0,91/1,09:1	1000	For tipping unit pumps, pumps for cranes, ecc..
ZF NH/1c	0,91/1,09:1	1000	For tipping unit pumps, unit pumps for concrete, pumps for cranes, ecc..
ZF NH/4c	1,17/1,40:1	430	Per pompe per ribaltabili, ecc..
ZFN221/10b+PL+NL/1c	1,75/2,09:1+0,91/1,09:1	560+600	double PTO for concrete pumps

ZF NMV1 221 Power take-off (ratio1,55:1) max available torque 1300 Nm for concrete pumps (only with gear ZF16S2520TO).

Power take off at flywheel (ratio1,29:1) max available torque 900 Nm for concrete mixers.



CLUTCH

Single dry plate, diameter 17". Pull type engagement with diaphragm spring. Hydro-pneumatic power steering engagement control, with driven disk wear recovery slave cylinder.



TRANSFER

Mechanical with two ratios. It consists of a series of helical spur gears, mounted on three shafts, engaged with each other. Differential can be locked by pneumatic control.

Transmission ratio: 1:1 - 1:1,6
Front/rear torque distribution ratio: 1:4,0



AXLES

FRONT

1st axle, driving and steering, in cast iron with double reduction, central by bevelled pair, lateral by epicyclic group in wheel hubs. 2nd axle in high tensile pressed steel, steering, not driving. Wheel stud protection.

REAR:

Two drive axles in tandem with double reduction, central by bevelled pair and final by epicyclic group in wheel hubs. The intermediate axle is fitted with distributor that distributes torque between the two axles. Differential lockable by pneumatic control from driver's seat. The tandem is fixed to the chassis by reaction rods with silent block.

On request:

Rear-axle ratio 1:4.229
Rear-axle ratio 1:5.009
Rear-axle ratio 1:5,558
Rear-axle ratio 1:6.095
Rear-axle ratio 1:6.588



SUSPENSIONS

FRONT

1st and 2nd axle, parabolic springs, n° 3 leaves 26x90 mm, hydraulic shock absorbers. stabilizer bar standard on 1st axle.

On request:

Stabiliser bar on 2nd axle.
Reinforced parabolic springs, n° 4 leaves 26x90 mm.
Mandatory for heavy duty version.

REAR

Parabolic springs, swivelling on central pin: n° 4 leaves 40x100 mm, torque bars and stiffening brackets. stabilizer bar as standard on 4th axle.

On request:

Stabilizer bar on 3rd axle.
Extra-reinforced conventional springs, n° 10 leaves 25x100 mm. Mandatory for heavy duty version.



CHASSIS

Special steel with high elasticity limit, two flat and parallel side members width 820 mm, C section 320x90x10mm, cross members riveted to the frame.

R.B.M. (Rail Bending Moment): 202.020 Nm (20.593 Kgm.).
Steel front bumpers with headlamp protection grids, front manoeuvring hook, rear underrun bar, rubber mud-guard 2nd axle, steel fuel tank capacity 300 litres.

On request:

Front bumper climbing step.
Rapid attachment for compressed air for tyres' inflation.
Rear underrun bar in set back position.
Extra long underrun bar for concrete mixer.
Rear manoeuvring hook.
Rear automatic towing hook.
Rubber mudguards on 3rd and 4th axle.
Side windlass for spare wheel(not for wheelbases 2350 - 2600 - 2850)



TYRES

FRONT: 13R22,5 156/150 G Single tubeless

REAR: 13R22,5 156/150 G Twin tubeless
Spare wheel on the chassis.

Other Possible combinations:

TYRES	ASSEMBLY	
	FRONT	REAR
315/80 R 22,5 156/150K	S	D
12 00 R 20 156/150G		
385/65 R 22,5 160J	S	
315/80 R 22,5 156/150K		D
365/85 R 20 164G	S	S
395/85 R 20 168G	S	S
525/65 R 20,5 173F		S

S single

D double

Other tyres available, subject to the Astra technical office approval



PNEUMATIC SYSTEM

Two-cylinder 630 cc compressor , APU (Air Processing Unit) that includes: regulation valve set at 10.3 bar, drier, 4-way safety valve, pressure reduction valve for parking circuit and services, 3 air tanks, capacity 30 litres + 2 with 20 litres.

ABS system and EBL (Electronic Brake Limiter)



BRAKES

Front and rear "duo-duplex" self-adjusting wedge type brakes with automatic play take-up.

Total net braking surface 12.058 cm².

ABS system.

Service brake: Pedal controlled air brake, acting on all wheels.

Solo vehicles, two independent circuits, one for 1st and 2nd axle, one for 3rd and 4th axle;

Towing vehicles, three independent circuits, one for 1st and 2nd axle, one for 3rd and 4th axle and another for the trailer;

Emergency brake: Incorporated in service brake.

Parking brake: Manual spring-type mechanical with pneumatic control acting on 3rd and 4th axle wheels.

IVECO BRAKE TURBO engine brake:

Braking power 255 kW (347 cv)

On request:

Hydraulic interarder.

1st and 2nd axle immobiliser system.

OFF/ROAD button for excluding ABS for speed < 15 kph.



STEERING

ZF 8099 quadrilateral power steering on front axle wheels with variable ratio 1:22.2/1:26.2 with auxiliary cylinder. Circuit with main hydraulic pump on engine and emergency pump on gearbox.

Steering rods with self-lubricating joints.

Height and inclination mechanical adjustable steering wheel.





ELECTRICAL SYSTEM

Voltage: 24 V
 Alternator generator 90 A - 28 V (2520 W).
 Accumulators: 2 in series, 143 Ah.
 Starter motor 24 V 5,5 kW.
 Mechanically controlled electrical circuit breaker.
 1 electrical joint 7-pole(ISO 7638) for trailer ABS(if applicable).
 1 electrical joints 15-pole(ISO 12089-4091) for trailer lighting (if applicable).
 Electrical provision for outfitters.
 Provision for diagnostics.
 Provision for radio/cb (without speakers)
 Glow plug for cold start.
On request:
 170 Ah accumulators;
 143 Ah tropicalised accumulators;
 Reverse alarm;
 Electric main current cut-off switch.



CAB

White cab with hydraulic tipping. Built in moulding fiberglass with tubular steel armature. Tested on the most demanding off road routes. Cab suspension with guiding arms, spiral springs, double action shock absorbers, anti-roll bar and end-of-stroke pads. Internal panels completely washable and fireproof. 4-speed ventilation and heating system with air recirculation system. Collapsible first step. Electric power windows on driver and passenger doors. Driver seat with pneumatic suspension and seat belt. Mechanical passenger with seat belts. Tinted athermic windows. Steering wheel adjustable in height and angle.
On request:
 Car radio RDS, CD;
 Car radio RDS, CD, MP3, Blue Tooth technology;
 Compressed air quick coupling for cab cleaning;
 Roof hatch;
 Air conditioning;
 Centralized closing of the doors with remote control;
 Extra colour cab: metallic / non-metallic;
 Heated and electric powered rear view mirrors;
 Cab rear window;
 External sun visor.



SERVICE DATA(I)

Engine oil sump and filters	28
Gearbox oil	13
Power steering oil	18
Cab tipping oil	1
Clutch circuit oil	0,5
Transferer oil 86.44-86.48	6,5
Transferer oil 86.54	10
Front axle with final red. oil	6,5
Intermediate axle with final red. oil	27
Rear axle with final red. oil	16
Integral PTO oil	3
Cooling system water	33
Diesel	300



INSTRUMENTATION

Dashboard and ergonomic instrument board contain the function buttons and the identification commands.
Indicator lights: engine oil low pressure, alternator charging low, main beam lights, side lights, engine warm-up, rear fog light, hazard lights, tractor turn indicators, trailer turn indicators (if applicable), rotating lights, cab lifted, axles differential locked, differential lock, front brakes air pressure low, rear brakes air pressure low, trailer brakes air pressure low (if applicable), parking brake engaged, splitter (reduction on), slow speeds (1-4/9-12), power take-off on (if applicable) air filters clogged, power steering oil level low, rear view mirrors heated (if applicable), ABS, trailer ABS (if applicable), main steering circuit failure, steering auxiliary circuit failure.

ASTRA Veicoli Industriali

Via Caorsana, 79
 29100 Piacenza (Italy)
 Tel. ++39-523/5431
 Fax ++39-523/59.17.73
 www.astraspa.com

DEALER